







## SendIP 2.1.0.16

10/08/2007

### program

-  **SendIP**  
complete installation  
EXE, 2.0 mb
-  **SendIP**  
small installation  
(without VB6 runtimes)  
EXE, 718 kb
-  **SendIP** (updates only)  
only executable  
ZIP, 185 kb
-  **SendIP**  
short manual  
PDF, 88 kb

### history

- 09/08/2007**  
**Added multilanguage support.**
- 08/08/2007**  
Removed bug saving ini parameters..  
Added update [DynDNS](#).
- 07/08/2007**  
Automatic font sizing (96/120 dpi).  
New param 'start with Windows™'.  
Added body text to e-mail.
- 26/07/2007**  
Added 'send e-mail'..  
Interface completely rebuilt.
- 13/07/2006**  
New simplified interface.
- 10/07/2006**  
First official release.

### description

**SendIP** is a small tool to know, when connected to internet, actual IP. IP found can be send as a text file to a folder with **FTP**, send by **E-Mail** or send to update parameters of **DynDNS** service.

SendIP uses an asp page to discover IP.  
My own page is <http://www.gbcdpot.com/SendIP.asp>.  
The page appears like this:  
<% Response.Write Request.ServerVariables("REMOTE\_HOST") %>

SendIP when started is a small icon in the traybar.  
To open settings window click on the icon; right click to see program menu.

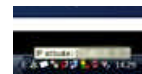
SendIP is a free program. SendIP is supply without any kind of warrantee or support.

[GbC](#)

### guide / screenshots

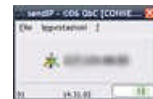
#### Start

When started sendIP is an icon in the traybar.  
Clicking with left button opens the program window, with right button sows program menu.



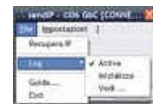
#### Program main window

Click on the middle big button to find actual IP and do action actions selected in options.  
On the bottom left the counter to next event (if active), a click and a progress bar.



#### 'File' Menu

*Find IP* - Same action of the big button in the middle.  
*Guide* - Opens a brief guide in PDF™ format (requires Acrobat™ Reader™)  
*Exit* - Quit program



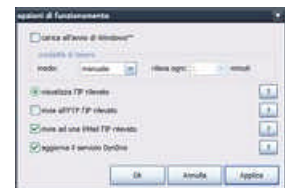
#### 'Settings' Menu

*General* - Show a window with all possible parameters  
*Connection* - Show the connection status window  
*IP finder* - Set the address of page to find IP address  
*FTP send* - Set parameters to send IP data to a folder via FTP  
*E-Mail send* - Set parameters to send an e-mail with IP (and some other data) address  
*DynDns update* - Set parameters to update DynDns service



### General

'Run with Windows™' runs SendIP at the Windows™ start. Is valid only for active user (not all).  
Automatic/manual mode is to find IP changes every N minutes.  
For every IP change (manual or automatic) SendIP can *show* IP, *send* with FTP, *send* with e-mail or update DynDns settings.  
'?' buttons are to open specifica parameters windows.



### IP finder

Is the URL of page with current IP.  
My page can be user freely and is here:  
<http://www.GbCdepot.com/sendIP.asp>  
Page is open and saved; IIP informations are read by SendIP and after processed.



### FTP send

SendIP can sen IP number as a text file to a folder site via FTP.

**Server FTP** - Is the FTP server URL (ex: ftp.nnnnnn.com)  
**Port** - The port used by FTP server; default is 21  
**User** - Is the user ID to access FTP server.  
**Password** - Password of the user id.  
**Destination** - Remote folder where copy IP data.  
**File name** - Is the remote file name.



**E-Mail send**

SendIP can send IP numbet via e-mail.

**Recipient address** - Is the recipient e-mail address.

**Object** - Is the message object.

**Text** - Is the body text of the message. To insert IP in the text use \$IP\$; same for \$DATE\$ and \$TIME\$.

**Sender address** - Is the sender e-mail address.

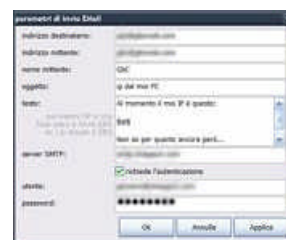
**Sender name** - Is the sender name.

**SMTP server** - Is the address of SMTP server who sends e-mail.

**Authentication required** - Select if the SMTP server requires an authentication.

**User** - Is the user ID to access SMTP server

**Password** - Password for specified user ID.

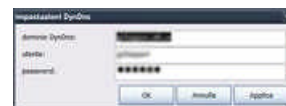
**DynDns update**

SendIP can update IP data on [DynDns](#) profiles.

**DynDns domain** - The user domain to update (ex: [MyName].atx.cx)

**User ID** - User ID to open DynDns profile.

**Password** - Password of specified user.

**Connection**

Show current connection parameters and, for dialups, can connect to internet.

**About**

Show SendIP author info.



00:122:1